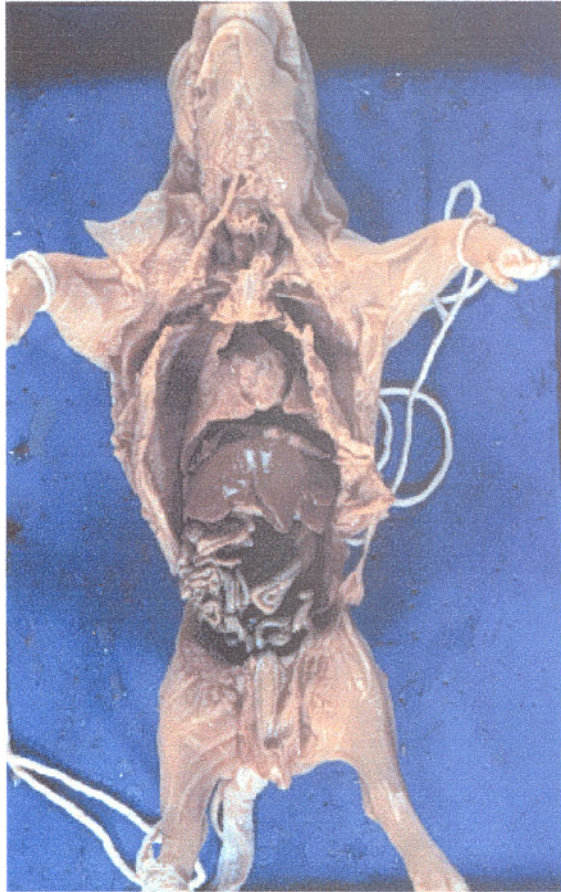


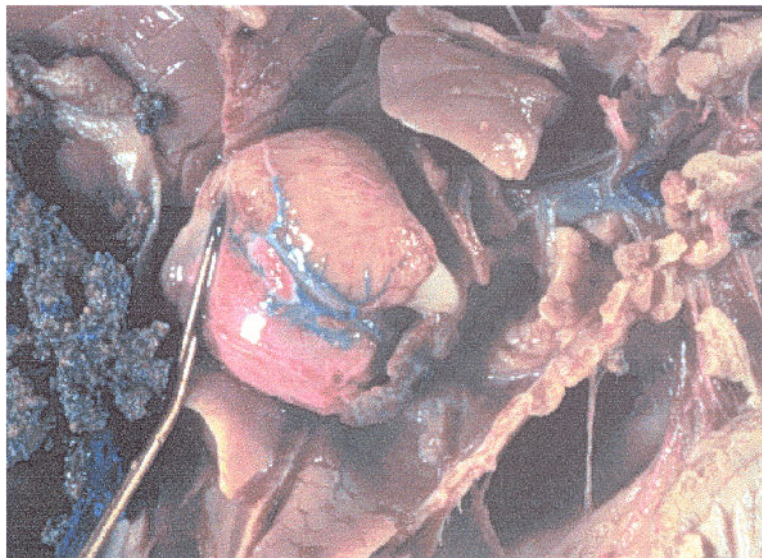
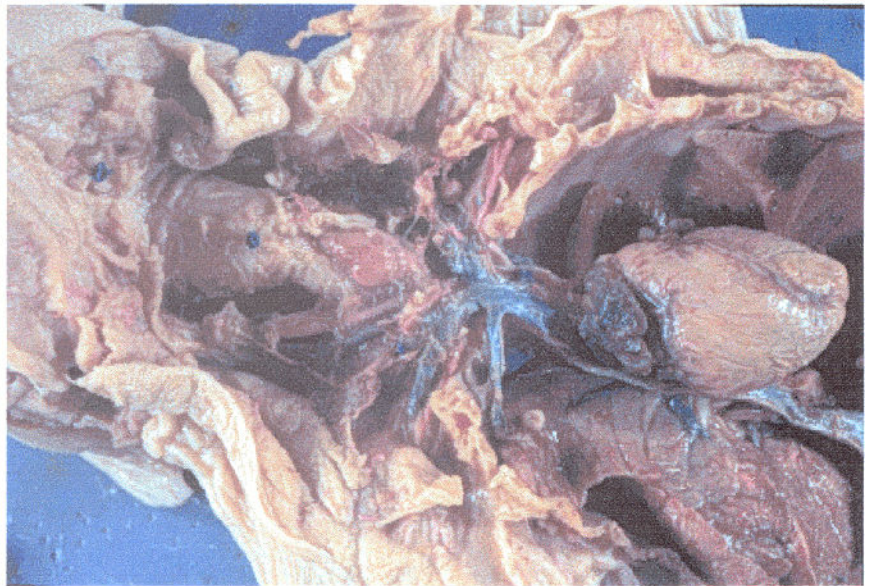
## Pig Dissection: a photo tour...



These are the organs we can easily see on the photo to the left: larynx, heart, lungs, liver, intestine, diaphragm, urinary bladder, umbilical arteries

### Thoracic and Upper Circulatory of Pig Dissection

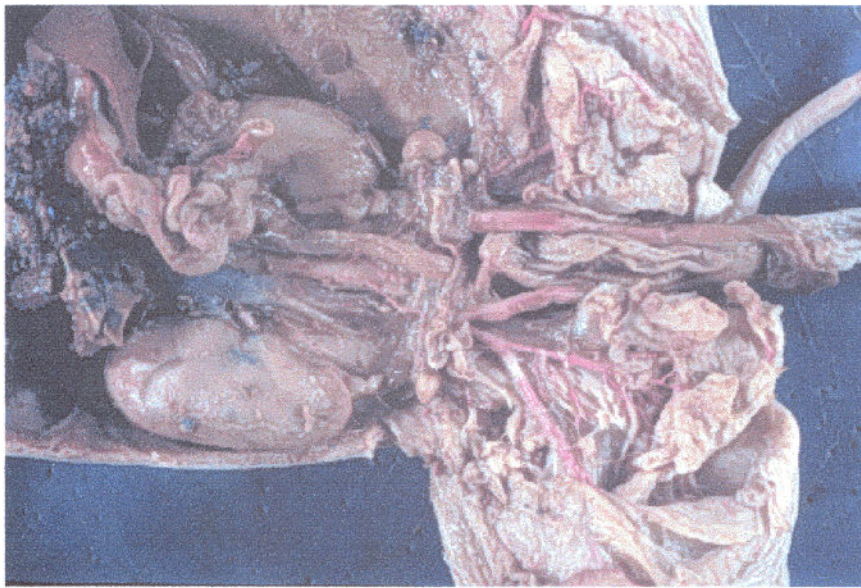
These are the organs we can easily see on the photo below: larynx, trachea, subclavian veins, right & left external & internal jugulars, right & left innominate, right atrium, right and left ventricles, coronary vein, ribs, thyroid, lungs, postGava



### Heart Close-up

Answer these questions :

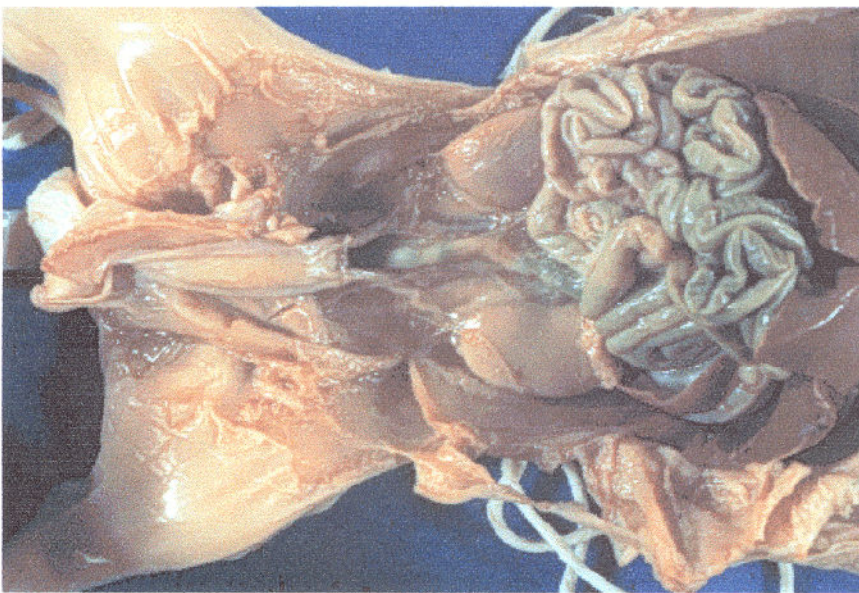
- What is the function of the heart (with the probe on it)?
- What are the names of the chambers of the heart? In what order does blood flow through them?
- What is the name of the vein running across the organ?
- What is the dark red lobe on the lower right of the organ called? What vessel might that be coming off the top (the white one)?
- What is the organ surrounding the one with the probe?



## Female Urogenital and Lower Circulatory of Pig Dissection

These are the organs we could easily see here:

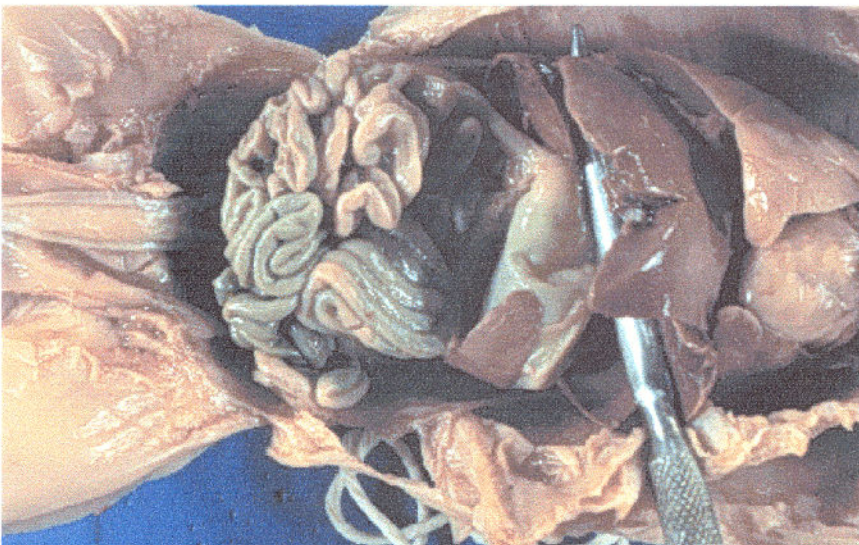
kidney, ureter, ovary, horns of the uterus, postcava, descending aorta, renal vein, renal artery, femoral veins, iliac veins, umbilical arteries, urinary bladder (deflated)



## Abdominal Cavity

These are the organs we could see here:

liver, spleen, urinary bladder, umbilical arteries, intestines, rectum, kidney, ureter, ducts deferens,



## Liver, Spleen & Stomach (to the left)

Some easily visible organs:

intestines, stomach, spleen, liver, lungs, urinary bladder, heart

Salivary Glands & Masseter Muscle in Cheek (to the right)

These are the organs we can easily see here: 2 salivary glands, masseter muscle, tongue

