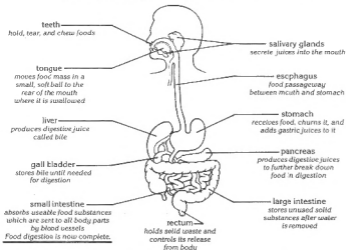


# The Digestive System

The digestive system changes food into useable substances for the body.



Find the statement in Column B that best describes each word in Column A. Write the letter of that statement in the space provided.

## Column A

- \_\_\_\_\_ mouth
- \_\_\_\_\_ large intestine
- \_\_\_\_\_ liver
- \_\_\_\_\_ stomach
- \_\_\_\_\_ teeth
- \_\_\_\_\_ small intestine
- \_\_\_\_\_ salivary glands
- \_\_\_\_\_ gall bladder
- \_\_\_\_\_ villi

## Column B

- makes bile
- produce juices in the mouth
- churns food, adds juices
- where digestion begins
- water removed, solids stored
- tiny, finger-like projections found in small intestine
- breaks, grinds food into pieces
- absorbs food, sends it throughout body
- stores bile

# THE HUMAN DIGESTIVE SYSTEM

Name \_\_\_\_\_

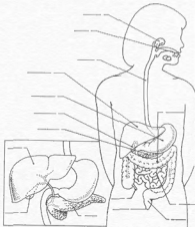
Label the following parts of the human digestive system on the diagram below.

- a. mouth
- b. salivary glands
- c. esophagus
- d. stomach
- e. liver
- f. pancreas
- g. small intestine
- h. large intestine
- i. rectum
- j. anus
- k. appendix
- l. gall bladder

## Accessory Organs

Food does not pass through three organs in the digestive system. Label the three accessory organs in the diagram to the right.

- m. liver
- n. gall bladder
- o. pancreas



Fill in the blanks below with the correct answers.

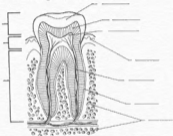
Food passes from the \_\_\_\_\_ to the \_\_\_\_\_ to the \_\_\_\_\_ and then to the \_\_\_\_\_, where gastric juices break up proteins and other molecules. From the stomach, food passes to the \_\_\_\_\_, where nutrients are absorbed into the body's bloodstream. Undigested material moves into the \_\_\_\_\_ or colon, where water is resorbed and the residual materials is compacted. This material, now known as feces, moves into the \_\_\_\_\_ where it is stored temporarily until it passes out of the \_\_\_\_\_. Above the stomach is the \_\_\_\_\_, which plays many important roles in digestion, and nested below the stomach is the \_\_\_\_\_, which secretes many of the digestive enzymes.

## THE MOUTH AND TEETH

Name \_\_\_\_\_

Label the following parts of the tooth on the diagram below.

- a. gum
- b. nerves and blood vessels
- c. dentin
- d. enamel
- e. pulp
- f. crown
- g. neck
- h. root
- i. cementum
- j. bone



### Teeth in Your Jaw

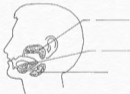
The diagram shows the teeth in your upper jaw. Label the four kinds of teeth. Then, indicate what kind of tooth is used for: cutting food, tearing and shredding food; grinding and crushing food.

- l. incisors \_\_\_\_\_
- m. canines \_\_\_\_\_
- n. premolars \_\_\_\_\_
- o. molars \_\_\_\_\_

### Salivary Glands

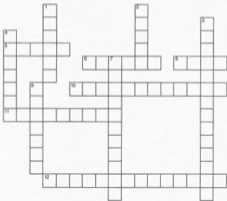
The mouth contains three pair of salivary glands. Label these glands in the diagram to the right.

- p. parotid
- q. submaxillary
- r. sublingual



# HUMAN DIGESTIVE SYSTEM CROSSWORD

Name \_\_\_\_\_



## Across

5. Chemical digestion of carbohydrates begins here.
6. Enzyme that begins the digestion of proteins
8. Produced by the liver, this emulsifies fats to make digestion easier.
10. Acid present in the stomach
11. Tube between the mouth and stomach
12. Water and certain vitamins are absorbed here from the undigested food.

## Down

1. Wastes are stored here before expulsion
2. Fingerlike projections which increase the surface area of the small intestine
3. Long, convoluted tube where chemical digestion is completed
4. Enzyme present in saliva
7. Involuntary muscle contraction that move the food through the digestive system
9. In this muscular pouch, food is mixed with gastric juice.