

A Last Look — Part I

- A. In each of the following groups one item does not belong. Circle that item and in the space provided explain why it does not belong.

1.	biceps	sartorius	biceps
<hr/>			
2.	cochlea	cornea	retina
<hr/>			
3.	humerus	fibula	radius
<hr/>			
4.	hammer	pivot	hinge
<hr/>			
5.	estrogen	thyroxin	dermis
<hr/>			
6.	marrow	perlosteum	pleura
<hr/>			
7.	stomach	liver	bladder
<hr/>			
8.	amyl	lile	stirrup
<hr/>			
9.	ovary	uterus	aorta
<hr/>			
10.	thyrenus	cerebrum	medulla
<hr/>			

- B. Write the name of the body system or body part that will make each sentence a correct statement.

1. The _____ system brings oxygen into the body and removes carbon dioxide and other gases.
2. The body system that provides for the continuation of life is the _____ system.
3. The _____ system changes food into useable substances for the body.
4. The system that enables the body to move is the _____ system.
5. The _____ system provides the force and channels for the distribution of blood.
6. The system that supports the body and gives it a shape is the _____ system.
7. The _____ is a muscular organ that pumps blood to the lungs and to other parts of the body.
8. The system that removes wastes from the body is the _____ system.
9. _____ secretes hormones directly into the bloodstream.
10. The _____ is the part of the body that provides protection, sensory reception, and the regulation of temperature.

A Last Look – Part II



A. _____

A. _____

A. _____

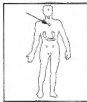
A. _____

B. _____

B. _____

B. _____

B. _____



A. _____

A. _____

A. _____

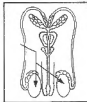
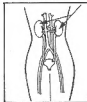
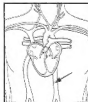
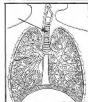
A. _____

B. _____

B. _____

B. _____

B. _____



A. _____

A. _____

A. _____

A. _____

B. _____

B. _____

B. _____

B. _____

On Line A, name the body part indicated.

On Line B, write the body system to which the body part belongs.

A Last Look — Part III

- A. Find the statement in the second column that best describes each body part in the first column. Write the letter of the statement from the second column to match the body part in the first column.

- | | |
|------------------------|---|
| 1. _____ esophagus | a. thighbone |
| 2. _____ sensory nerve | b. carries blood to the heart |
| 3. _____ marrow | c. transparent covering of the eye |
| 4. _____ femur | d. part of the brain |
| 5. _____ vein | e. nerve that carries messages to the brain |
| 6. _____ cornea | f. carries blood away from the heart |
| 7. _____ cerebellum | g. makes blood cells within bone |
| 8. _____ motor nerve | h. inner layer of skin |
| 9. _____ artery | i. food tube that connects mouth to stomach |
| 10. _____ dermis | j. breastbone |
| | k. nerve that carries messages from the brain |
| | l. part of the ear |

- B. Circle the word that will make each sentence a true statement.

1. The _____ function to remove liquid wastes from the blood.

adrenals
pancreas
kidneys
2. The _____ is the muscular organ in which a fetus develops.

thymus
uterus
urethra
3. The exchange of oxygen for carbon dioxide within the lungs is called _____.

perspiration
respiration
circulation
4. The largest artery of the body is the _____.

aorta
septum
ventricle
5. The _____ produces digestive juice called bile.

bladder
liver
pleura
6. The _____ gland controls the rate of the body's metabolism.

sweat
adrenal
thyroid
7. The _____ and the spinal cord make up the central nervous system.

brain
branchi
biceps
8. When a muscle works, it _____, or becomes shorter and thicker.

expands
contracts
relaxes
9. The fluid part of the circulatory system is called _____.

blood
bile
urine
10. The _____ is the bone that protects the brain.

scapula
pelvis
cranium

A Last Look — Part IV

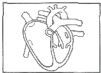
A. Explain fully the meaning of this cartoon.



B. There is something wrong with each of these drawings. Circle the part of the drawing that is incorrect and explain why you circled it.



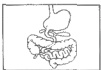
1. _____



3. _____



2. _____



4. _____

C. Read each set of directions carefully before you write anything. Follow the instructions exactly.



If bones are held together by ligaments, write *sternum*. If tendons hold bones together, write *humerus*.



If the knee is a gliding joint, write *wrist*. If the knee is a hinge joint, write *elbow*.



If the transparent covering of the eye is the iris, write *flower*. If this transparent covering is the lens, write *camera*. If it is neither, write *vision*.



If the pinna is an endocrine gland, write *hormones*. If the pinna is part of the ear, write *auditory*.



Write *year* if the number of bones in the human body is less than the number of days in a year. Write *hour* if there are more bones in the body than there are days in a year.



Write *sperm* if the placenta is part of the male reproductive system. If the placenta is part of the female reproductive system, write *fetus*. If it is neither, write *ovary*.



If the sternum separates the left and right side of the heart, write *pulse*. Write *seal* if the septum separates the left and right side of the heart.



If the outer layer of skin is the dermis, write *poth*. If this outer layer is the epidermis, write *skin*. If it is neither, write *hair*.

Unscramble the circled letters to solve this puzzle.



_____ a part of the body and a key that will open many doors