

**Part 1: Introduction**

Follow instruction sheet for procedures.

- ★ You and your partner will sign off (initial) on the chart as you find the structures.
- ★ You should be able to explain their functions, if asked by teacher.

1. Write three observations you made when you examined the surface of the eye:

- ★ \_\_\_\_\_
- ★ \_\_\_\_\_
- ★ \_\_\_\_\_

**Part 2: External Anatomy**

**Identify:**

Place your initials here ☺

★ cornea	
★ sclera	
★ optic nerve	
★ external eye muscle	
★ fatty tissue	



**Questions:**

1. Why don't you have to worry about cutting into the sclera when you are removing the extrinsic muscles and fatty tissue?

2. How does the fat tissue look different from the muscle tissue?

3. What is the choroid's function?

4. Why is the cornea so cloudy?

5. What is the tapetum lucidum? Do human have this structure? Why or why not- explain.

### **Part 3: Internal Posterior Anatomy**

#### **Identify:**

Initials

★ vitreous humor	
★ retina	
★ blind spot	
★ choroid	
★ peel layers of retina & choroid	

#### **Questions:**

5. What is “posterior”?

6. Besides cutting into it, how did you find out that the sclera is so tough?

7. What was the consistency of the vitreous humor? How could you describe it?

### **Part 4: Internal Anterior Anatomy**

#### **Identify:**

initials here ☺

★ ciliary body (muscle)	★
★ lens	★
★ suspensory ligament	★
★ iris	★
★ pupil	★
★ aqueous humor	★

#### **Questions:**

8. What is the “anterior”?

9. How do ciliary bodies (muscles) help you see?

10. What is a cataract?

11. Which structure of the eye would be just behind the pupil opening?

12. What is “glaucoma”?

## Part 5: Cornea & Lens

### Questions:

13. How does the thickness of the cornea compare to the thickness of the sclera?

14. What shape is the sheep's pupil? How does it compare to the shape of the human pupil?

15. What color is your sheep's iris (not the cornea)?

16. Describe the texture of the lens.

Part 6. Match the following parts of the eye to their function: (ciliary body, pupil, sclera, iris, retina, lens, & tapetum lucidum)

\_\_\_\_\_ Contains the photoreceptors for vision.

\_\_\_\_\_ The colored portion of the eye.

\_\_\_\_\_ This structure changes shape to focus light on the retina.

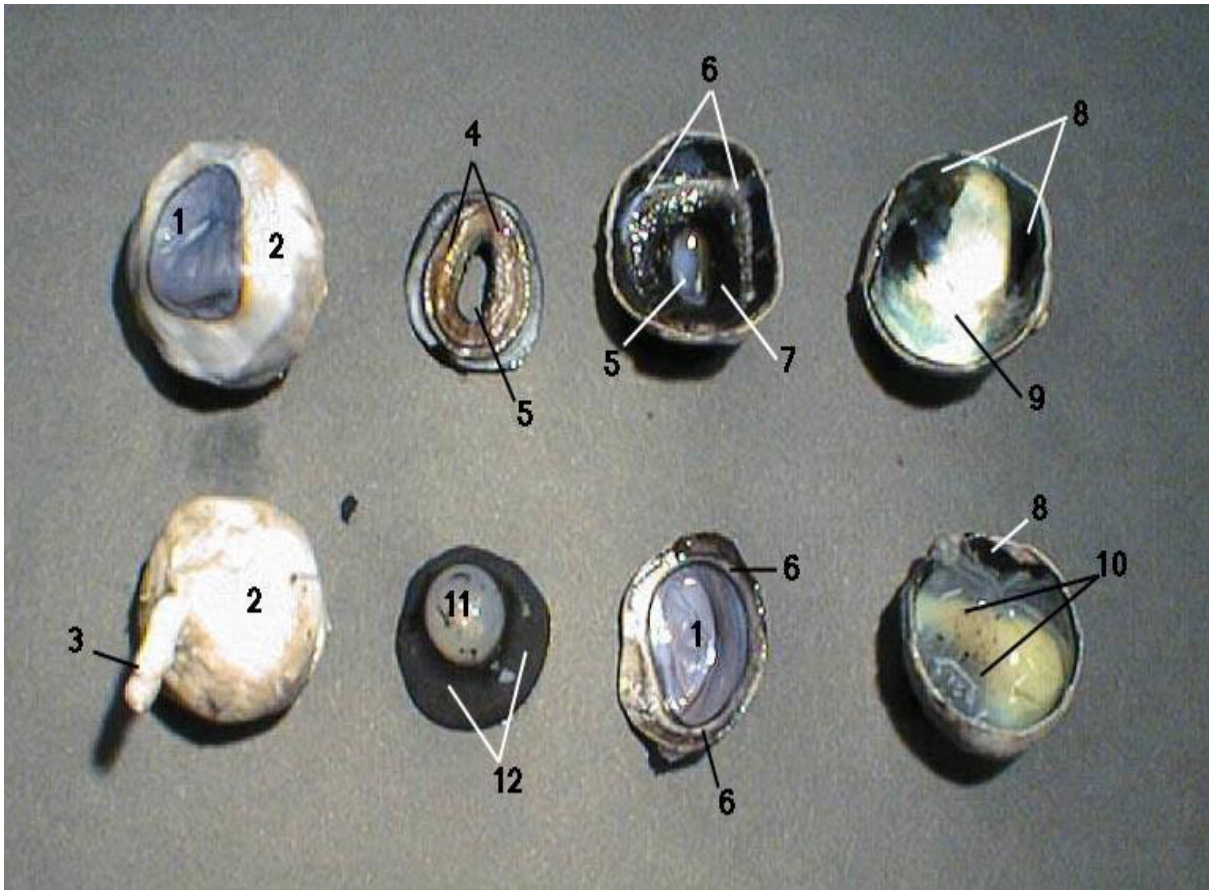
\_\_\_\_\_ The opening in the iris through which light passes.

\_\_\_\_\_ The iridescent portion of the choroid layer in nocturnal animals.

\_\_\_\_\_ Consists of muscles, which control and shape the lens.

\_\_\_\_\_ The white of the eye.

4. Use the pictures below to name the parts of the eye:



1. \_\_\_\_\_
2. \_\_\_\_\_
3. \_\_\_\_\_
4. \_\_\_\_\_
5. \_\_\_\_\_
6. \_\_\_\_\_
7. \_\_\_\_\_
8. \_\_\_\_\_
9. \_\_\_\_\_
10. \_\_\_\_\_
11. \_\_\_\_\_
12. \_\_\_\_\_