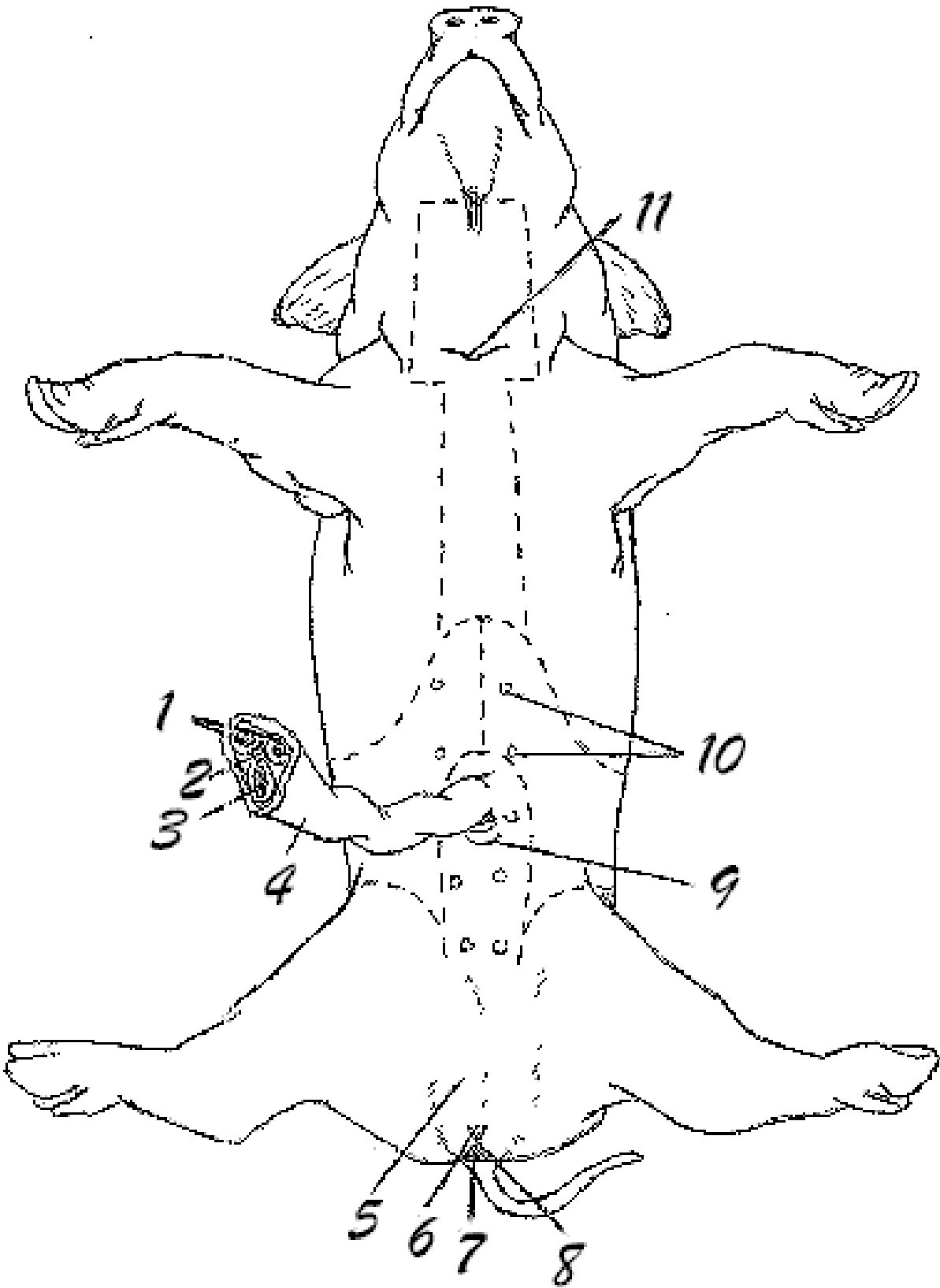
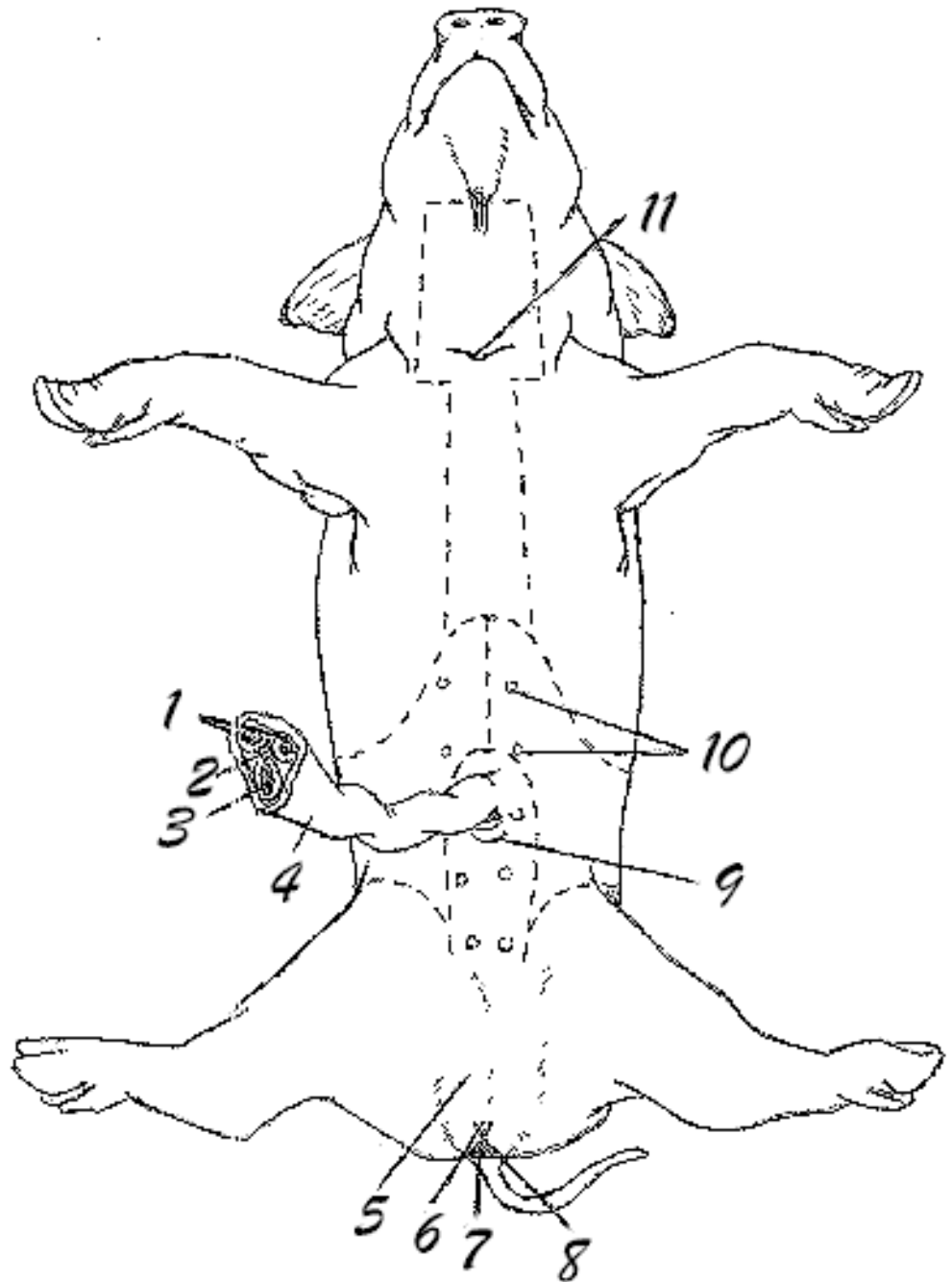


Fetal Pig Dissection



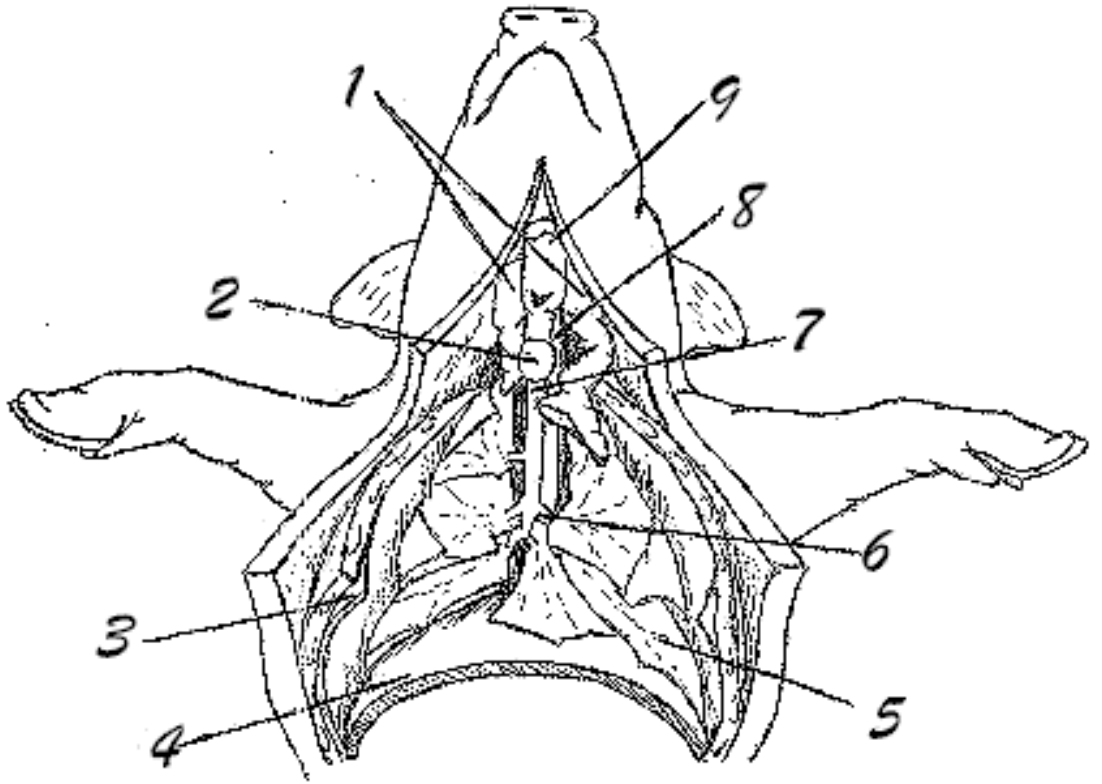
EXTERNAL ANATOMY

1. umbilical arteries
2. allantoic duct
3. umbilical vein
4. umbilical cord
5. scrotum
6. genital papilla
(female)
7. anus
8. urogenital opening
(female)
9. urogenital opening
(male)
10. mammary papillae
11. tip of sternum



THE NECK AND THORACIC CAVITY (RESPIRATORY SYSTEM)

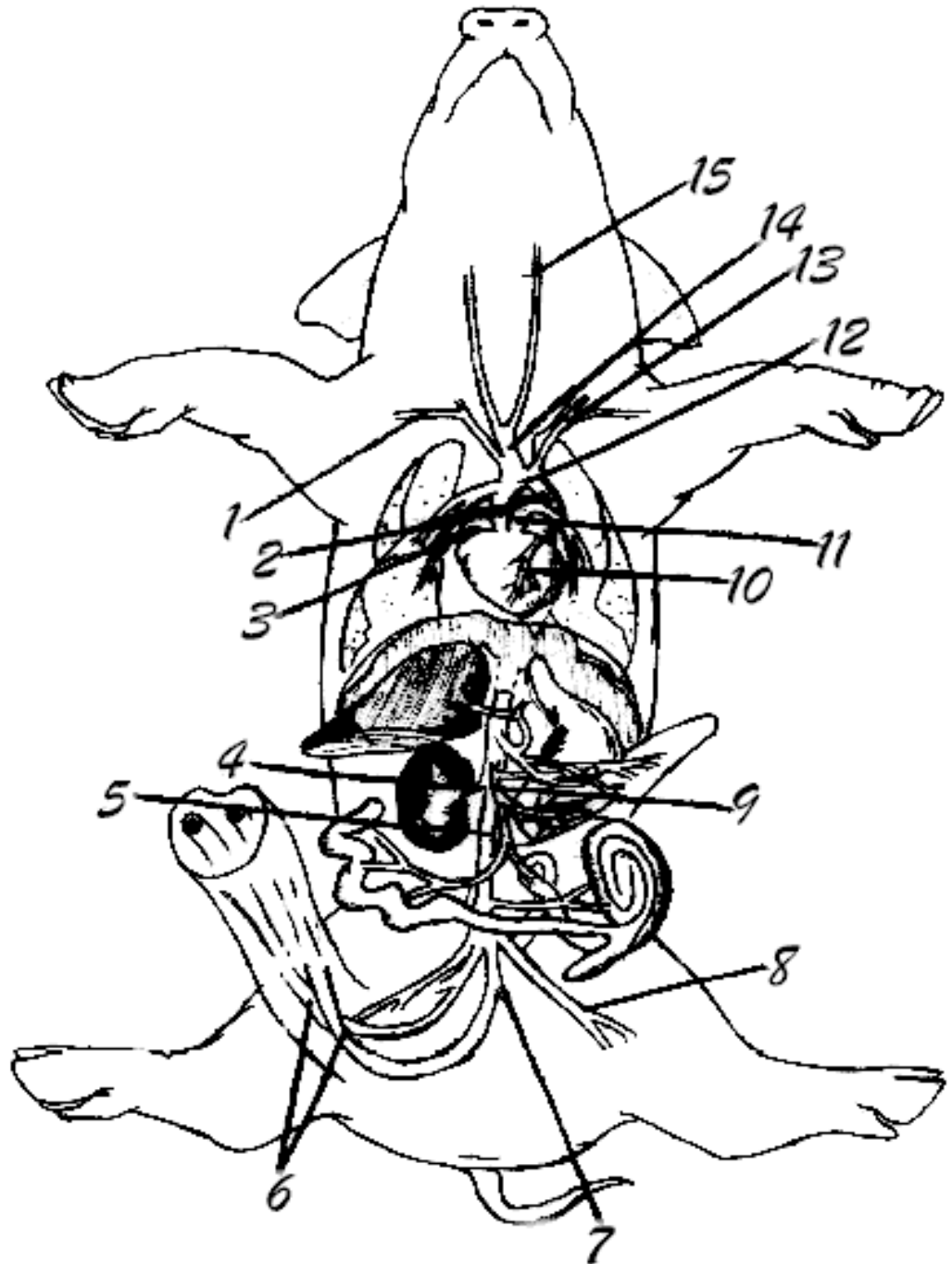
1. thymus
2. thyroid
3. pleural
membrane
4. diaphragm
5. lungs
6. bronchi
7. trachea
8. esophagus
9. larynx



CIRCULATORY SYSTEM

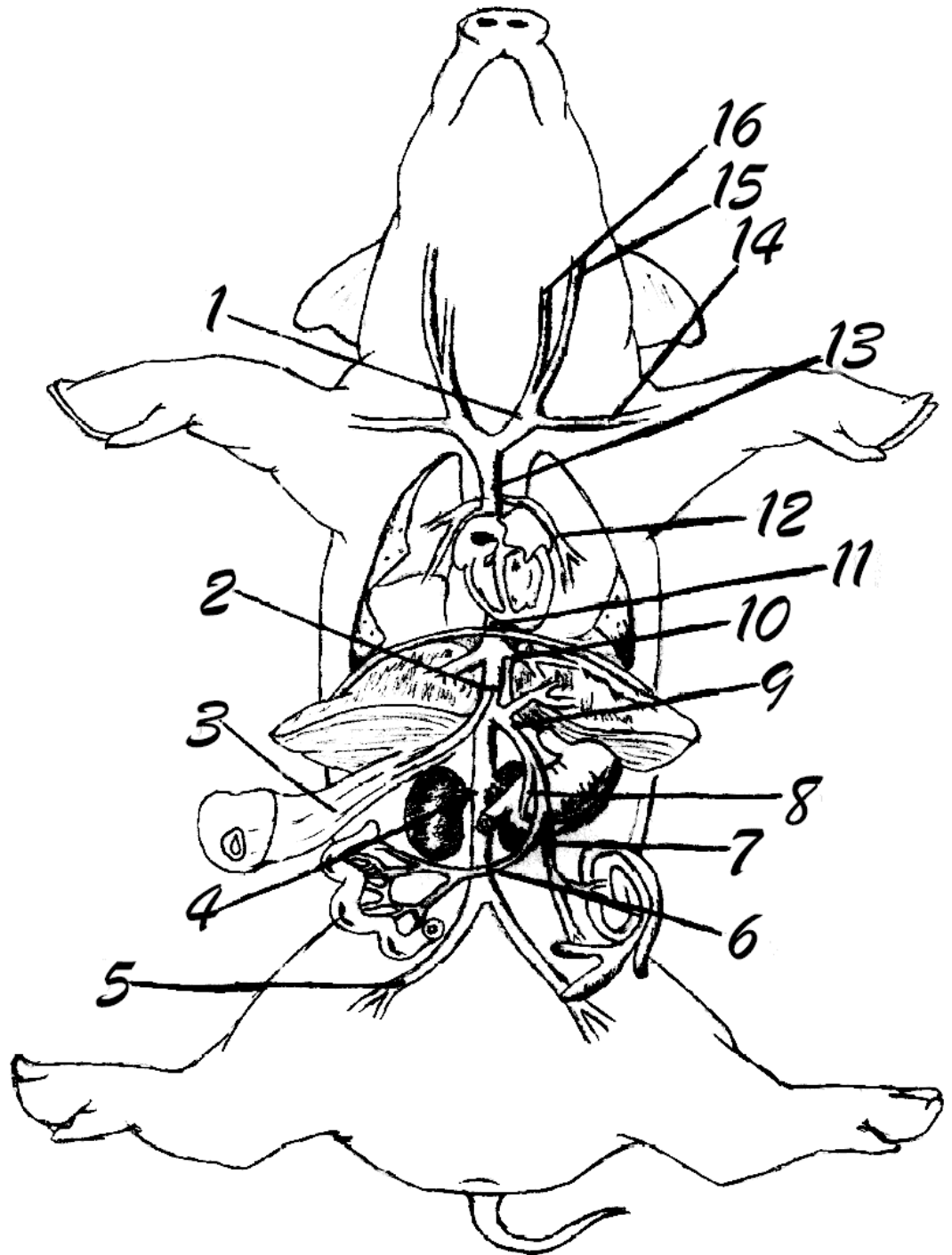
THE MAJOR ARTERIES OF THE FETAL PIG

1. right subclavian
2. ductus arteriosus
3. right auricle
4. renal
5. dorsal aorta
6. umbilical
7. internal iliac
8. external iliac
9. anterior mesenteric
10. coronary
11. pulmonary
12. aortic arch
13. left subclavian
14. brachiocephalic
15. common carotid



MAJOR VEINS

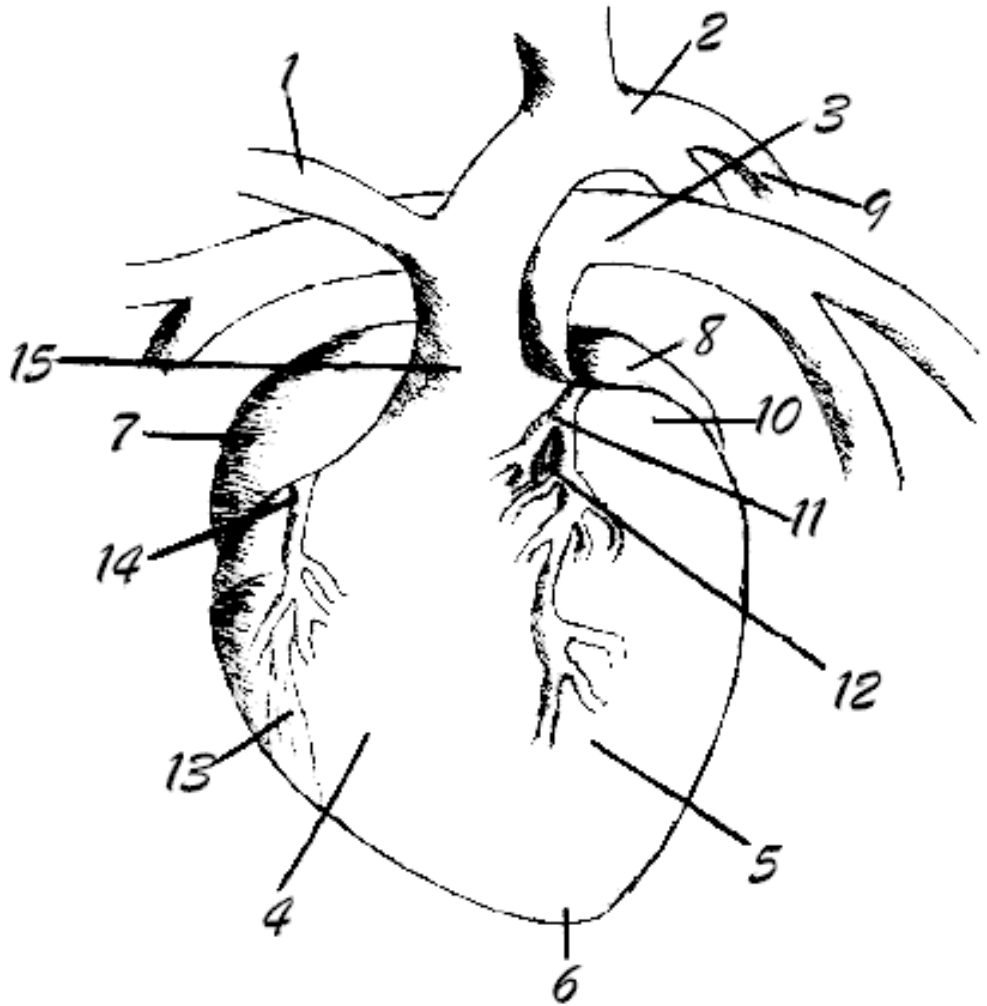
1. brachiocephalic
2. ductus venosus
3. umbilical
4. renal
5. common iliac
6. superior
(anterior)
mesenteric
7. inferior
mesenteric
8. gastric
9. hepatic portal
10. hepatic
11. posterior vena
cava
12. pulmonary
13. anterior vena
cava
14. left subclavian
15. external jugular
16. internal jugular



THE HEART (DORSAL VIEW)

(Please note that some of the structures are internal and are not currently viewable, but the arrows indicate their approximate location.)

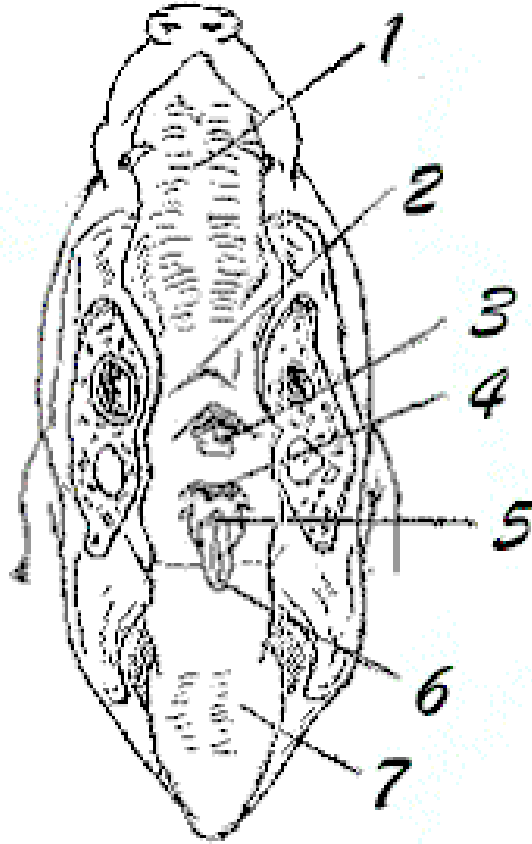
1. brachiocephalic artery
2. aorta
3. pulmonary artery
4. right ventricle
5. left ventricle
6. apex
7. right auricle
8. left auricle
9. ductus arteriosus
10. left atrium
11. bicuspid valve
12. chordae tendinae
13. papillary muscle
14. tricuspid valve
15. semilunar valve



THE DIGESTIVE SYSTEM

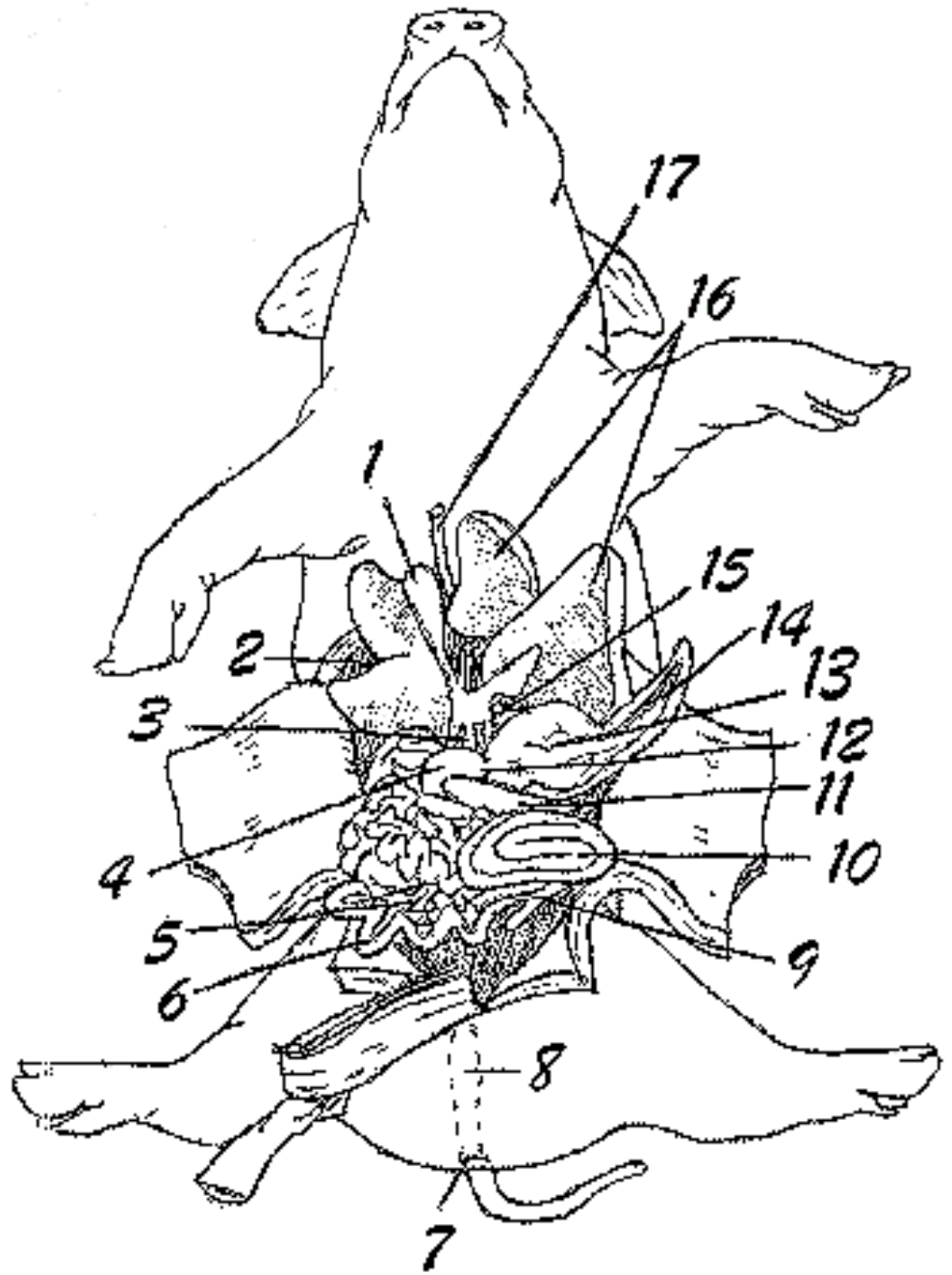
ORAL CAVITY AND PHARYNX

1. hard palate
2. soft palate
3. nasopharynx
4. esophagus
5. glottis
6. epiglottis
7. tongue



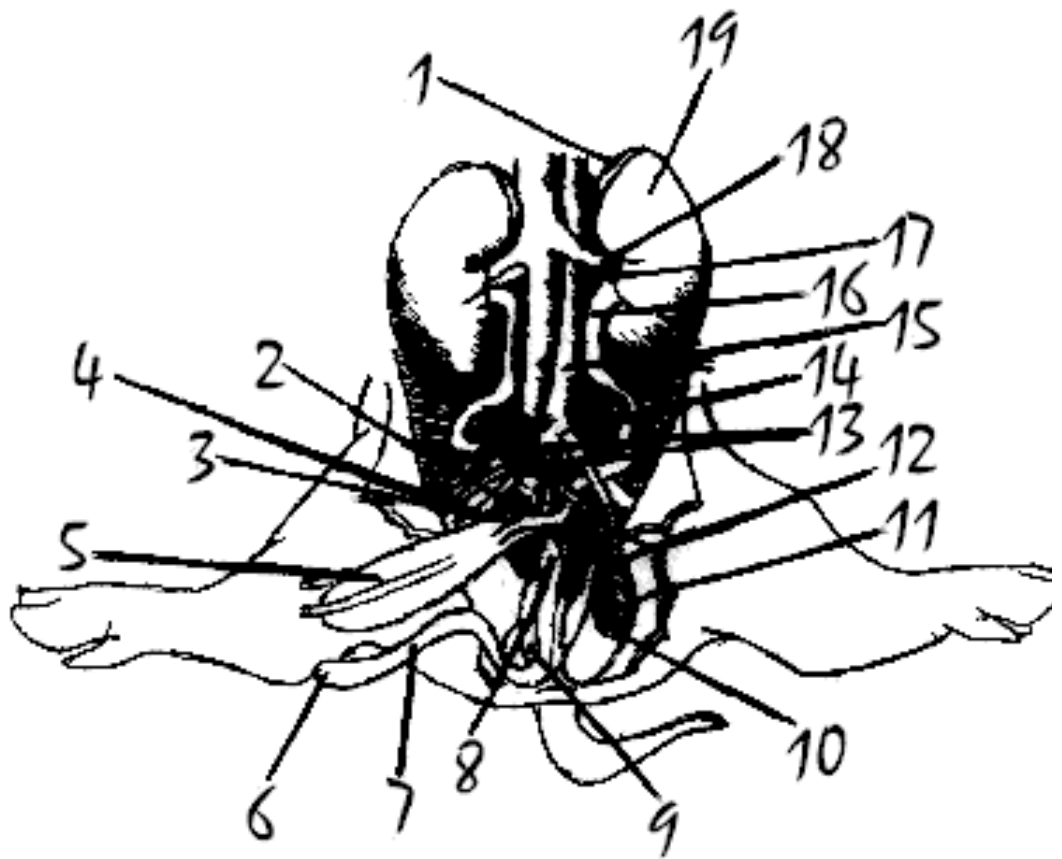
ABDOMINAL ORGANS

1. gall bladder
2. diaphragm
3. bile duct
4. duodenum
5. mesentery
6. small intestine
7. anus
8. rectum
9. cecum
10. colon
11. pancreas
12. pyloric sphincter
13. stomach
14. spleen
15. esophagus
16. retracted liver lobes
17. umbilical vein



the male reproductive system.

1. adrenal gland
2. seminal vesicle
3. prostate location
4. inguinal canal
5. urinary bladder
6. urogenital opening
7. penis
8. urethra
9. bulbourethral (Cowper's) gland
10. epididymis
11. testis
12. vas deferens
13. umbilical arteries
14. genital artery
15. dorsal aorta
16. ureter
17. renal artery
18. renal vein
19. kidney



THE REPRODUCTIVE SYSTEM (FEMALE)

the female reproductive system.

1. kidney
2. genital artery
3. ureter
4. umbilical
arteries
5. cervix
6. urinary bladder
7. urethra
8. urogenital
opening
9. urogenital
sinus
10. vagina (cut
open)
11. body of uterus
12. uterine horn
13. oviduct
14. ovary
15. renal artery
16. renal vein

