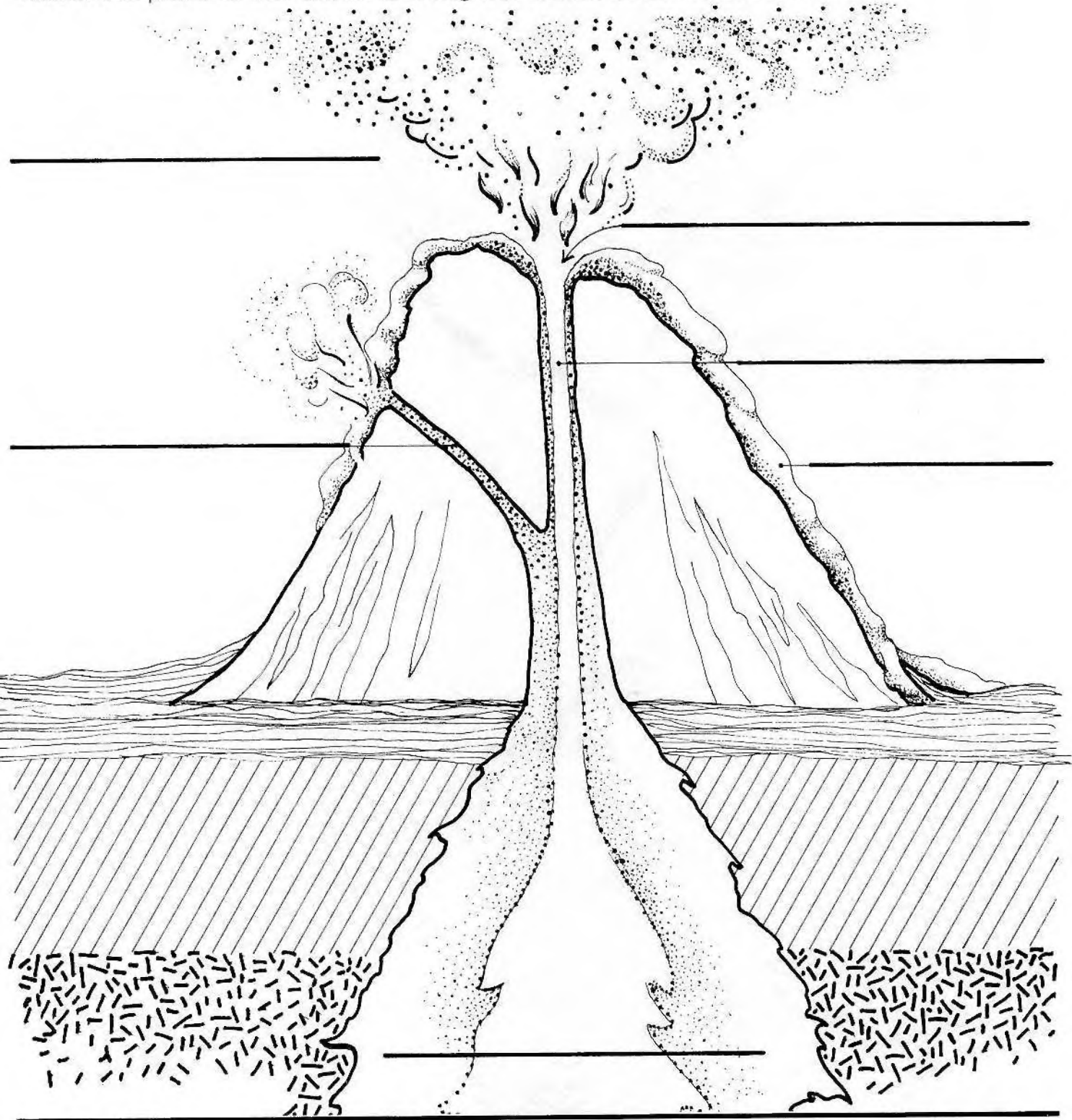


Label the parts of this volcano using the words from the **WORD BANK**.



### WORD BANK

central vent  
magma chamber

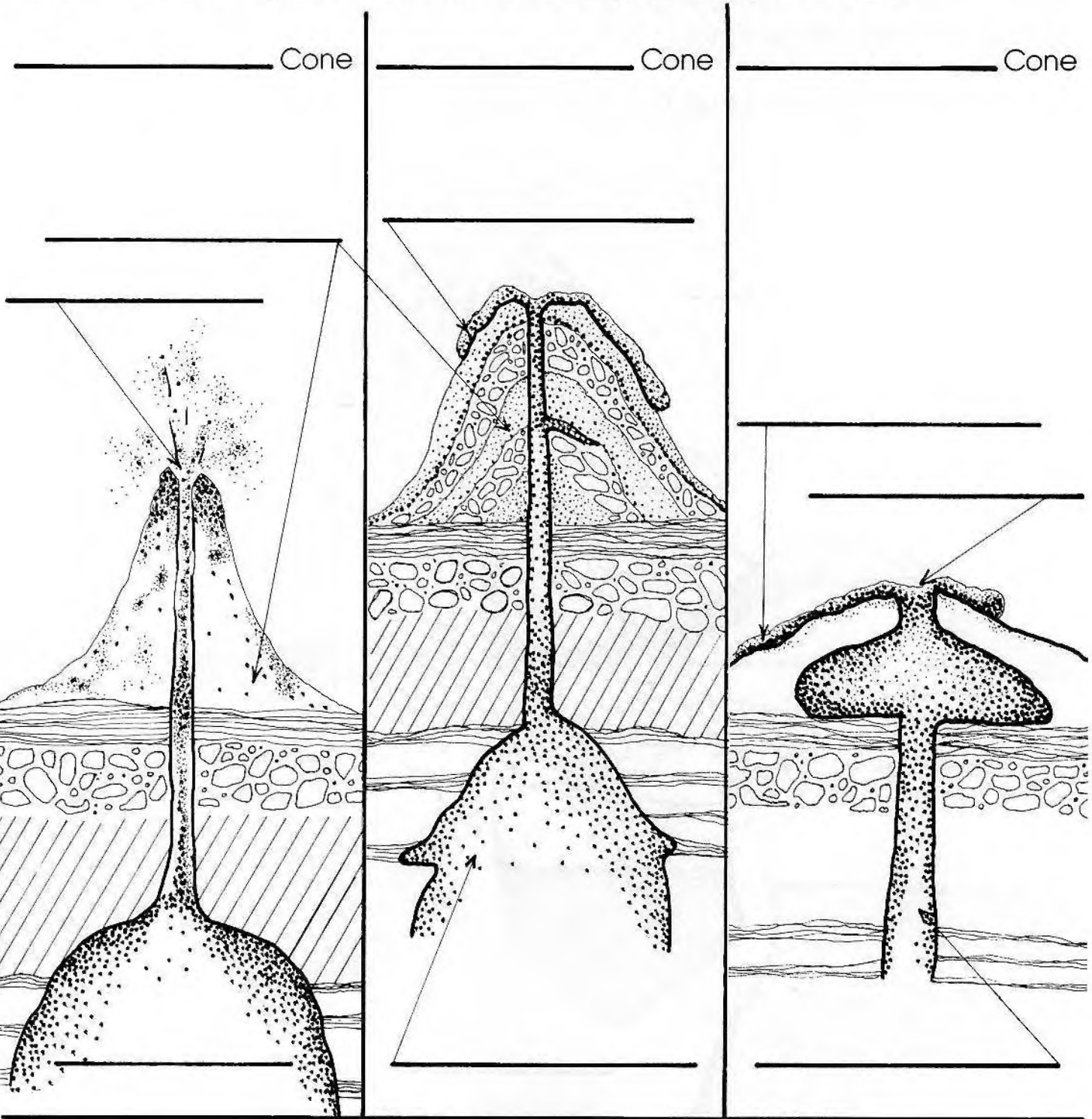
lava  
side vent

conduit  
gas and dust

# Volcanic Cones

Name \_\_\_\_\_

Volcanic cones can be classified by their shapes. Label the three different kinds of volcanic cones pictured below. Label the parts of the volcanoes.



## WORD BANK

Shield  
vent

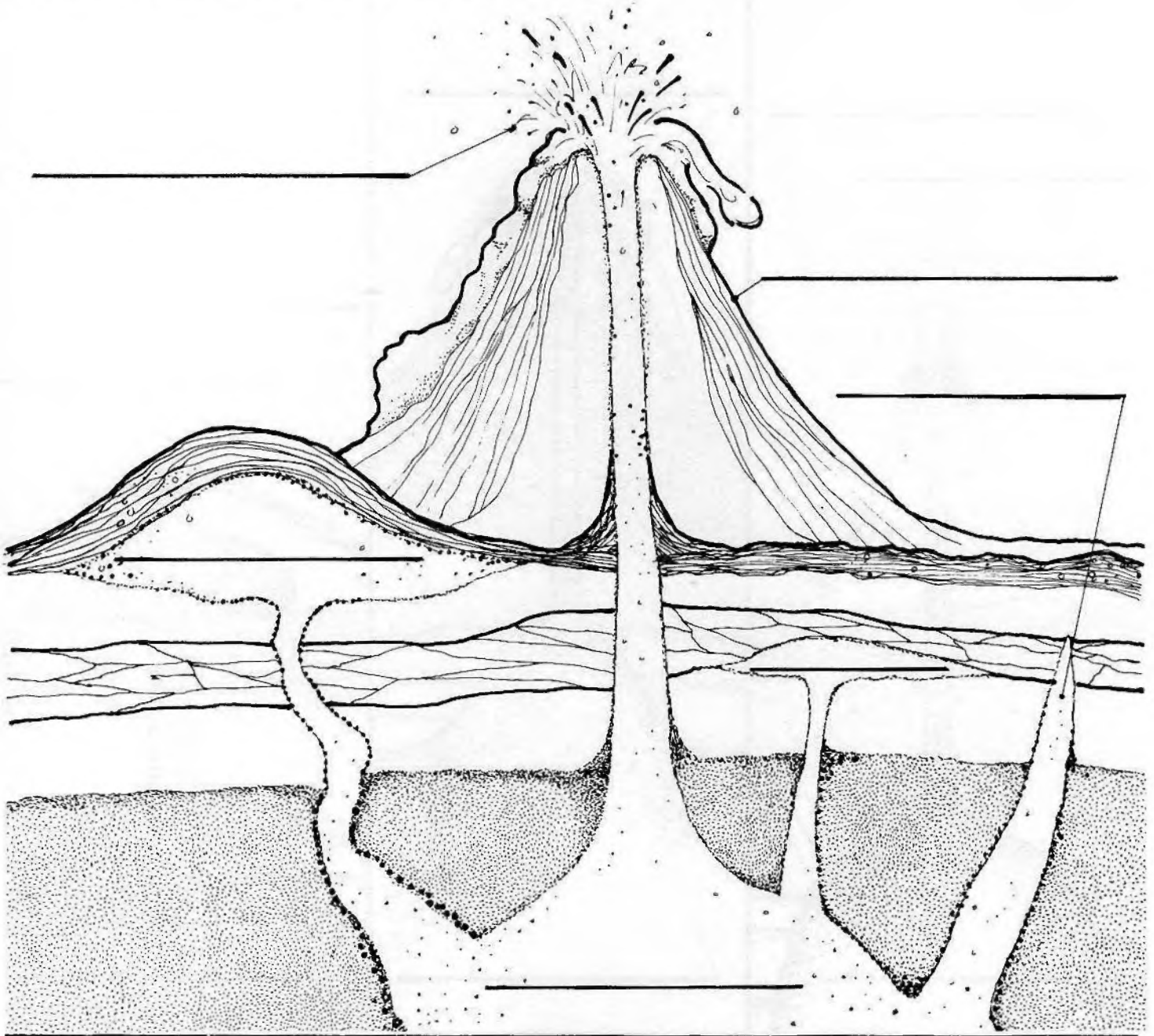
Composite  
lava flow

Cinder  
cinders

magma

Igneous rock is one of the three major types of rock. It is formed by the hardening of molten rock (magma). Magma does not always reach the earth's surface as lava erupting from a volcano. It often forms other igneous rock structures underground.

Label the igneous rock structures shown here.



## WORD BANK

laccolith  
lava

sill  
volcano

dike

batholith